

## DIVISION H: 4-H ACHIEVEMENT

Sponsored by the **Bulkley Valley Exhibition, Shooting Star Amusements, Driftwood Diamond Drilling**

### 4-H Coordinator:

**Lois Taylor** 250.847.3692 / loist@bulkley.net

### Livestock weigh-in times: Thursday, August 22:

Beef: 9–12 noon / Sheep: 1–3pm / (Market lambs 12:30 main scale) Swine: 9–11am

### Poultry & Rabbit arrival, inspection and cooped:

9-10:30 am Wednesday, August 21

### SHOW TIMES:

#### Monday, August 19

- i. Horse Showmanship & Project classes: 9 am

#### Tuesday, August 20

- i. Cloverbuds: Scrapbooks to club leader by Aug. 20

#### Wednesday, August 21

- i. Card Judging Poultry 11:30 am, Rabbit 12 pm
- ii. Show Times: Poultry 12:30 am, Rabbit Show to follow

#### Thursday, August 22

Card judging: Swine 4 pm, Beef 5 pm, Sheep 5 pm

#### Friday, August 23

- i. Beef: 9:00 am / Sheep: 9:00 am / Swine: 2:00 pm

#### Saturday, August 24

- i. Auction sale: 2:00 pm

#### Sunday, August 25

- i. 4-H Dog project: 12-2 pm
- ii. 4-H Awards Presentations: 3 pm

### Showmanship Competitions

- i. Showmanship: 70%
- ii. Condition of exhibit: 20%
- iii. Appearance of exhibit: 10%

### 4-H Rules and Regulations / Entry and Passes:

- 1) All classes are on an inter-club basis where applicable. Open to all 4-H members only.
- 2) Out of District 4-H projects must be entered by the 4-H Club Leader and must be received by the 4-H Fair Coordinator (Lois Taylor) no later than July 15<sup>th</sup>.
- 3) All BV 4-H projects will be reviewed by the 4-H Club Leader and the 4-H Fair Coordinator no later than the July Council meeting, based on club registrations.
- 4) 4-H members may enter their projects in open classes by paying the entry fee and completing the open class entry form, on their own.
- 5) All camping unit passes are requested by the 4-H Fair coordinator in club groups and fees are the responsibility of the individual member/family.
- 6) 4-H passes will be provided to leaders for distribution to participating 4-H members and leaders only. Parents and siblings must purchase appropriate passes at the Fair office prior to entry to the grounds. Wrist bands must be worn and lack of a wrist band will result in no grounds entry.
- 7) NO ANIMALS allowed in the camping areas, under any circumstances.

### Housing:

- 8) Stabling for horse projects is the responsibility of individual members and clubs. Stable forms must be filled out.
- 9) 4-H projects will be allocated stalls, pens, cages or tables by the 4-H Coordinator.
- 10) No changes can be made to stalls, pens or cages until such changes are first cleared by the 4-H Fair Coordinator.
- 11) Cloverbud projects will be collected by club leaders and set up by the club designated leader

on Tuesday, August 20, by 4 pm (Should be coordinated with the 4-H coordinator).

- 12) All livestock (with the exception of Poultry and Rabbits) are to be in the barns no earlier than 9 am and no later than 12 Noon for Beef; 1-3pm for Sheep, 9-11am for Swine on Thursday, August 22. (As per weighing times).

- 13) All barns, stalls, pens and cages must be cleaned before leaving the Fair grounds.

### Livestock (beef, sheep, swine):

- 14) All beef, market lambs and swine are to be weighed "off the truck" before feeding, watering and washing.
- 15) No horns are permitted on any 4-H livestock. All market animals must be castrated. All animals must be free from communicable diseases.
- 16) Sheep must be inspected by the Division Director before unloading and weighing. Sheep must be free from keds, or will be refused entry into the 4H show and the Fair Grounds and summarily sent home. Market lambs are to be shorn to 1/2".
- 17) All beef animals are to be tied with appropriate halters and neckties.
- 18) Animals considered to be not marketable and which are culled may not be sold through the 4-H Auction; however, after the auction, signs may be posted offering the animal for sale.
- 19) In showmanship classes, the animal shown must be the 4-H member's project.
- 20) No 4-H animals are permitted in the camping areas at any time (including the days prior to the Thursday fair opening).
- 21) All exhibitors are encouraged to decorate their stalls, including information about the projects and the exhibitor. Education of the public is very important and through the promotion of projects, exhibitors contribute to the Fair's goals and objectives.
- 22) Projects may not leave the Fair grounds until after 4 pm Sunday without express permission from the 4-H Fair Coordinator.

### Horse:

- 23) Riding helmets must be worn at all times when mounted.
- 24) Horses are NOT PERMITTED in the camping area for any reason or at any time.
- 25) Horse show will follow BC Horse Council rules.

## H1: 4-H Beef

Judge: TBA

**Card Judging:** Thursday 5:00 PM – Beef 4-H Members  
**4-H BEEF SHOWMANSHIP**

**Show Time:** 9:00 am – Friday, August 23

- 101 Senior Showmanship:** In memory of **Graeme Johnstone**, Sponsored by **Christina Johnstone**
- 102 Intermediate Showmanship:** **Deer Ridge Farm (R & D Purnell) – (Keeper). Leann Mohle: (Perpetual)**
- 103 Junior Showmanship:** **Smithers Feed Store– (Keeper)**

### 4-H BEEF PROJECTS

Female projects

- 104** 2019 bull calf
- 105** 2019 heifer calf
- 106** Yearling heifer Born 2018, class to be determined by entries (class may be split [by age] as necessary).
- 107** 2-year-old cow born 2017 with 2019 calf at foot. Cow and calf to be judged as a unit.
- 108** Cow born prior to 2017 with 2019 calf at foot. Cow and calf to be judged as a unit.

**CHAMPIONSHIP CLASS:** Grand & Reserve Female \$200 Prize Money to Grand 4H Female Sponsored by **Pleasant Valley Cattlemans**

**4-H BEEF FEMALE FUTURITY**–Added prize money sponsored by: **Paul Trobak Memorial Fund, Vallee Creek Herefords, Lychak Acres** Entry fee \$10 each. Must be pre-registered on general livestock entry form. **No late entries will be accepted.**

**201** Heifer born 2018

**202** Heifer born 2017 with a 2019 calf

**203** Heifer born 2016 with a 2019 calf

A three-year competition for 4-H female beef projects. The same animal must be shown for three consecutive years. Points will be awarded each year. Winner will be decided on total points for three years. Prize money will be paid to three placings, with all entry fees plus added prize money being split 60%, 25% and 15%. (202 & 203 must have been 4H registered units in the appropriate years).

### 4-H BEEF PROJECTS

Weight divisions (light/medium/heavy) to be decided by 4-H Coordinator after weigh-in.

**109 Lightweight** Market steers (under 20 mos).

**110 Mediumweight** Market steers (under 20 mos).

**111 Heavyweight** Market steers (under 20 mos).

**CHAMPIONSHIP CLASS:** Grand & Reserve Steer (Top 2 steers from each weight division) All then to return for Sale Order selection. (The following two classes must be signed up before 8 am Friday)

**112** Group of 4 steers–Woodmere Cattle

**113** Pair of Steers–Re/max Houston

### Trophies:

- 1<sup>st</sup> place Lightweight Steer – **Rita Giddings Memorial** (Perpetual), **Kispiox Valley Farmers' Institute** (Keeper)
- 1<sup>st</sup> place Mid-weight Steer – **Coyote Cattle Co.**
- 1<sup>st</sup> place Heavyweight Steer – **Thompson Creek Cattle Corp.**
- Grand Champion Market Steer – **CIBC**
- Reserve Champion Market Steer – **E.A. Strimbold**
- Top place straight bred Hereford Steer – **O.G. Halvorson Cattle Co.**
- Top place straight bred or cross bred Angus Steer (from one purebred parent) – **Central Interior Angus Association**
- 1<sup>st</sup> Place Yearling Heifer – **Huxtable Family**
- Top place straight bred or cross bred Angus Female (from one purebred parent) – **Central Interior Angus Association**
- Top Angus or Angus cross Yearling Heifer – **Poplar Meadows Angus**
- Top Angus or Angus cross Cow/calf – **Poplar Meadows Angus**
- Grand Champion Female – **L.B. Warner Memorial**, (Keeper) – **Calderwood Realty**
- Res. Champion Female – **Rugged Edge Holdings**
- Sr. Aggregate Beef Member (total points from one project, showmanship and judging). Perpetual and Keeper – **Pleasant Valley Cattlemans' Association**
- Jr. Aggregate Beef Member – **Scotia Bank**
- Sr. Beef Judge: **BC Hydro** (Perpetual), **Christina Johnstone** (Keeper)
- Jr. Beef Judge: **Salem Contracting**
- Additional show sponsorship: **Smithers Family Chiropractic, Bulkley Cleaners, Thompson Creek Cattle Corp.**

## H2: 4-H Sheep

Judge: TBA

**Card Judging:** Thursday - 5:00 pm Sheep 4H members

**Showmanship and Conformation classes:**

9:00 am–Friday, August 23

**4-H SHEEP SHOWMANSHIP**301 Sr. Showmanship (13+ as of Dec. 31<sup>st</sup>)303 Jr. Showmanship (9-12 as of Dec 31<sup>st</sup>)**Trophies:**

- Sr. Sheep Showmanship – **South Hazelton Women's Institute – Robertson Acres**
- Jr. Sheep Showmanship – **Eljira Suffolks (Stronks) – Robertson Acres**

**4-H SHEEP PROJECTS**

304 Unit 1 Market lamb

305 Unit 2 Ewe lamb

306 Unit 3 Yearling lamb

307 Unit 4 Ewe with lamb(s)

**CHAMPIONSHIP CLASS** – Grand & Reserve Female**4-H Sheep Trophies:**

- Supreme Champion 4-H Ewe: **Dewey Cummins Memorial**
- Grand Champion Market Lamb: **Hamming's Butcher Shop**
- Res. Champion Market Lamb: **Rugged Edge Holdings**
- Grand Champion Ewe Lamb: **Bulkley Electric & BC Purebred Sheep Association**: \$25 prize money
- Res. Champion Ewe Lamb: **Four L Farm (The Lapadat Family)**
- 1<sup>st</sup> Place – Yearling Ewe – **Charlie McClary – Re/Max Bulkley Valley**
- Top Suffolk or Suffolk X Market Lamb – **Two Bridge Ranch**

**Aggregate and Judging Trophies, 4-H Sheep:**

- Sr. Sheep Judge – **Bill & Barb Bryant Memorial** (Perpetual & Keeper) **Jennifer Mulder**
- Jr. Sheep Judge – **Stringfellow Family**
- Aggregate Sheep (total points from 1 project, showmanship and judging) – **Dave & Kathy Wilford**

**H3: 4-H Rabbit****Judge:** Solveig Adair, Terrace, BC**Rabbit arrival times:** 9 am – 10:30 am Wed., Aug. 21**Card Judging:** Wed. 12:00 pm – 4-H Rabbit Members **Showmanship and Conformation classes:** To follow 12:30 4-H Poultry Show

101 Rabbit Showmanship (Jr)

102 Rabbit Showmanship (Sr)

103a Unit I–Commercial type breeding stock (Buck Class)

103b Unit I–Commercial type breeding stock (Doe Class)

104a Unit II–Fancy type breeding stock (Buck Class)

104b Unit II–Fancy type breeding stock (Doe Class)

105 Unit IV–Doe with litter

106a Unit VII–Replacement project (Jr. Buck Class)

106b Unit VII–Replacement project (Jr. Doe Class)

107 Best Groomed Rabbit (keeper) **Calderwood Realty (Trophy)****Aggregate Trophies, 4-H Rabbit:**Sr. Rabbit Aggregate – **Reays' Rabbitry**Jr. Rabbit Aggregate – **Wayne and Lisa Reay****H4: 4-H Poultry****Judge:** Norma Kerby, Terrace, BC**Poultry arrival times:** 9 am – 10:30 am Wed, Aug. 21**Card Judging:** Wed. 11:30 am – 4-H Poultry Members **Showmanship and Conformation classes:** 12:30pm

101 Poultry showmanship (Jr. Class)

102 Poultry showmanship (Sr. Class)

103 Unit 1 Exploring the Poultry Project

104 Unit 2 Beginning Poultry Breeder (Trio or female with young to be shown)

105 Unit 3 Breeder Replacement Stock (Trio to be shown)

106 Poultry Showmanship In Hand (all ages)–**Sandra Hinchliffe–Re/Max Bulkley Valley**107 Best 4H Bird in Show–**Four L Farm (The Lapadat Family)****108 4H Chicken Races - Chesaw Farms****Aggregate Trophies, 4-H Poultry**Sr. Poultry Aggregate–**Charles McClary–Re/Max Bulkley Valley**Jr. Poultry Aggregate–**Suskwa Valley Farm****H5: 4-H Horse****Judge:** TBA

In Main Ring, Starting at 9 am Monday, August 19 and Tuesday, August 20 – Showmanship and Project classes. All Pre-junior entrants must have current BC Horse Council membership.

**4-H members showing in the BV Exhibition Light Horse show** must arrange stalls with the Light Horse Division.**4-H HORSE PROJECTS**All horse members must show in correct Western or English attire. In this 4-H Show, senior horses can be ridden with either a curb or snaffle and “two handed”. **Riding helmets must be worn at all times when mounted.****4H HORSE SHOWMANSHIP****4H HORSE PROJECTS**

All horse members must show in correct Western or English attire. In this 4-H show, senior horses can be ridden with either a curb or snaffle and “two handed”. Riding helmets must be worn at all times when mounted.

601 Sr. Showmanship (15+ as pf Dec. 31<sup>st</sup>)602 Int. Showmanship (13-14 as of Dec. 31<sup>st</sup>)603 Jr. Showmanship (9-12 as of Dec. 31<sup>st</sup>)

604 Pre-Junior Showmanship

605 Showmanship (Units 8, 9, 10, &amp; 11 Projects not previously shown)

606 2019 Championship 4-H Showperson (Top 2 Showpersons from classes 601, 602, &amp; 603 are invited to compete for the Titles of Grand and Reserve Grand Champion 4-H Horse Showpersons.)

**4-H HORSE HALTER**

607 Unit 11 Horse &amp; Handler

608 Unit 10 2 or 3-year-old Horse (in-hand)

609 Unit 9 Yearling

**4-H HORSE PERFORMANCE**

In Equitation, the rider is judged:

610 Unit A – English 617 Unit 3 – EQ

Equitation (EQ) 618 Unit 4 – EQ

611 Pre-junior – EQ 619 Unit 5 – EQ

612 Unit 1 – EQ 620 Unit 6 – EQ

628 Unit 8 –EQ 621 Unit 7 – EQ

613 Unit A – Western 622 Unit 2 – WQ

Equitation (WQ) 623 Unit 3 – WQ

614 Pre-junior – WQ 624 Unit 4 – WQ

615 Unit 1 – WQ 625 Unit 5 – WQ

629 Unit 8 - WQ 626 Unit 6 – WQ

616 Unit 2 – EQ 627 Unit 7 – WQ

**Skills Assessment**

Unit 11, Unit 10, Unit 9: Member to show skills at the discretion of the Judge; catch, walk, trot, stop, reverse direction, pick up feet, load in trailer, etc. Classes to be judged in the Round Pen.

In Pleasure, the horse is judged:

630 Unit A – English 649 Unit 8 - WP

Pleasure (EP) 636 Unit 2 – EP

631 Pre-junior – EP 637 Unit 3 – EP

632 Unit 1 – EP 638 Unit 4 – EP

648 Unit 8 –EP 639 Unit 5 – EP

633 Unit A – 640 Unit 6 – EP

Western 641 Unit 7 – EP

Pleasure (WP) 642 Unit 2 – WP

634 Pre-junior – WP 643 Unit 3 – WP

635 Unit 1 –WP 644 Unit 4 – WP

645 Unit 5 – WP

647 Unit 7 – WP

646 Unit 6 – WP

**4-H TRAIL HORSE**

Junior, Intermediate, Senior, In-Hand

4-H Fun Events: Dance Competition Dress-up Contest Team Relay

**Trophy Sponsors:**Sr. Horse Showmanship–**Gould Family**Int. Horse Showmanship–**Deer Ridge Farm, R & D Purnell**Jr. Horse Showmanship–**Ron Lapadat – Re/Max BV****Aggregates:**Jr. 4-H Horse Aggregate–**Shooting Star Amusements**Int. 4-H Horse Aggregate–**KCK Farms**Sr. 4-H Horse Aggregate–**Smithers Feed Store**4-H Senior Horse Judging–**Gweek Riding Centre**4-H Intermediate Horse Judging–**Smithers Feed Store**4-H Junior Judging–**Smithers Feed Store**

(Horse Aggregate is the total points from 1 project, showmanship and judging)

**H6: 4-H Swine****Judge:** TBA**Card Judging:** Thursday 4:00 PM – Swine 4-H members

2 pm Friday Aug 24 – Swine ring:

**4-H Swine Showmanship**701 Sr. Showmanship (13+ as of Dec. 31<sup>st</sup>) **Vihar** (Perpetual) **Hairs To You** (Keeper)702 Jr. Showmanship (9-12 as of Dec. 31<sup>st</sup>)**JP and Sons Ranch** (Perpetual & Keeper)**4-H Swine Projects**

704 Unit 1 Market Hog

705 Unit 2 Breeding Gilt

706 Unit 3 Sow and Litter

707 Best Groomed Swine – Prizes Sponsored by **Robertson Acres**Grand Champion Market Hog–(Perpetual) **Rick and Arlene Huisman** (Keeper)Res. Champion Market Hog–**Swallow Haven Farm** **Aggregate Trophies:**• Senior Swine Aggregate–**JP and Sons Ranch**• Junior Swine Aggregate–**Holly Ridge Farm****H8: 4-H Cloverbuds**

4 pm Tuesdays (scrapbooks to be handed into leader) Open to registered 4-H Cloverbud members.

Age 6-8 years inclusive

901 Unit 1 / 902 Unit 2 / 903 Unit 3 / 904 Unit 4

**H9: 4-H Dog****Judge:** TBA

101 Unit 1 Beginner Novice (Obedience)

102 Unit 2 Novice Obedience

103 4H Agility Class

**H12: Honeybee**

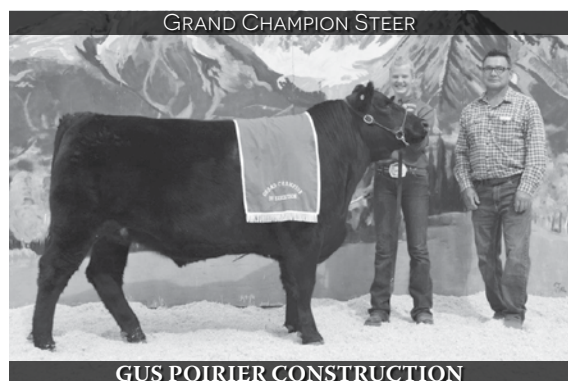
102 The Beginner Beekeeper

103 Working with Honeybees

Trophies donated by: **Whistler Ridge Excavating and Dinger Welding****4-H Entry Form**

Please Note: Bulkley Valley 4-H has the following policy for taking 4-H members' entries to the BV Exhibition: District BV 4-H Clubs will be entered at a District Council Meeting to be held in July. Members are responsible for ensuring that their leader is aware of the classes they wish to enter. Out-of-district 4-H members are welcome to enter by contacting the 4-H Coordinator by June 15, 2019. Out-of-district 4-H entries wanting to enter Open Classes must also fill in the Open Entry Form and send it directly to the Fair Office. Please copy or download additional forms ([www.bvfair.ca](http://www.bvfair.ca)) and include every animal that a member is bringing.

# THANK YOU TO OUR 2018 BUYERS...



GRAND CHAMPION STEER

GUS POIRIER CONSTRUCTION

## STEERS

## RESERVE CHAMPION

ROSCO HAULING AND LVH CONTRACTING

- ANDY MEINTS CONTRACTING
- BANDSTRA TRANSPORTATION SYSTEMS LTD
- PACIFIC INLAND RESOURCES (2)
- HOSKINS FORD
- SULLIVAN MOTORS (2)
- BABINE ANIMAL HOSPITAL AND DENTAL
- BULKLEY VALLEY CREDIT UNION
- NADINA TRUCK
- SMITHERS FEED STORE
- BABINE TRUCK & EQUIPMENT
- WEST FRASER CONCRETE (3)
- PETERBILT
- WOLF RIDGE & TRIANTHA ENT
- JOHN HIMECH LOGGING (2)
- LOUISE'S KITCHEN
- LVN CONTRACTING AND LAWRENCE NEDLEC
- TURCOTTE BROS CONTRACTING
- DAYBREAK FARMS
- DEAN MCDONALD
- SAUSAGE FACTORY AND HARRY LEFFERS & SONS
- STRONKS ELECTRIC
- SMITHERS LUMBER YARD
- SMITHERS PARTS
- TREELINE WOOD PRODUCTS



GRAND CHAMPION LAMB

HAMMINGS BUTCHER SHOP

## LAMBS

## RESERVE CHAMPION

HOSKINS FORD

- SULLIVAN MOTORS
- HOSKINS FORD
- NORTH CENTRAL PLUMBING & BULKLEY CLEANERS
- FRONTIER CHRYSLER
- NADINA TRUCK SERVICE
- MOOSE HUT HOUSTON



GRAND CHAMPION HOG

POPLAR MEADOWS ANGUS

## HOGS

## RESERVE CHAMPION

SAUSAGE FACTORY

- DAYBREAK FARMS
- BANDSTRA TRANSPORTATION SYSTEMS LTD.
- COAST MOUNTAIN GM
- FRONTIER CHRYSLER
- HOSKINS FORD
- SULLIVAN MOTOR PRODUCTS
- HOUSTON PETERBILT

## WELCOME TO THE 2019 4H LIVE AUCTION!

### 4-H SPONSORS DIAMOND

- Shooting Star Amusements
  - Smithers Feed Store
- ### PLATINUM
- Driftwood Diamond Drilling Ltd.

## SILVER

- Tom & Helen Britton
- BV Bobcat Services
- BV Insurance Services
- Rugged Edge Holdings
- Scotia Bank
- Thompson Creek Logging Co.

## BRONZE

- BC Purebred Sheep Breeders
- Jennifer Mulder
- Bulkley Cleaners

## BRONZE

- Bulkley Electric
- BV Cattleman's Assn.
- Calderwood Realty
- Canadian Imperial Bank of Commerce
- Coyote Cattle Co. Ltd.
- Deer Ridge Farm
- Dewey Cummins Memorial
- Dinger Welding
- E.A. Strimbold Ltd.
- Eljira Suffolks
- Four L Farm
- FYI doctors - Smithers
- Glacier Creek Ranch
- Goold Family
- Gweek Riding Centre
- Hair's To You
- Hammings Butcher Shop
- Holly Ridge Farm

## BRONZE

- Huisman, Rick & Arlene
- Christina Johnstone
- JP & Sons Ranch
- KCK Farms
- Kispiox Farmers Institute
- Matt's Red Angus
- O.G. Halvorson Cattle Co.
- Paul Trobak Memorial Fund
- Pleasant Valley Cattleman's
- Popular Meadows Angus
- Reay's Rabbits
- Wayne Lisa Reay
- Remax-Charlie McClary
- Remax-Ron Lapadat
- Tony Robertson
- Salem Contracting
- Sandra Hinchliffe
- Remax

## BRONZE

- Silver King Helicopters Ltd.
- Smithers Sausage Factory
- South Hazelton W.I.
- Stringfellow Family
- Suskwa Valley Farm
- Swallow Haven Farms
- Two Bridge Ranch
- Vallee Creek Herefords
- Valley Vending
- Wayne Hill Contracting
- Wildwind Trucking Ltd.
- Dave & Kathy Wilford
- Woodmere Cattle Co.
- Whistler Ridge Excavating

SATURDAY AUGUST 25<sup>TH</sup>, 2019 – 2:00 PM IN THE BVX LIVESTOCK RINGS  
FEATURING QUALITY HOME RAISED 4H PROJECTS FROM THE BV DISTRICT

**EVELYN 4H CLUB / QUICK COMMUNITY 4H CLUB / MID VALLEY 4H CLUB / TOPLEY 4H CLUB**

FOR YOUR CONSIDERATION: BEEF, LAMB AND HOG.

COME WATCH THE 4H SHOWS FRIDAY STARTING AT 9:00 AM BEEF, 9:00 AM SHEEP & 2:00 PM HOGS  
CONTACT LOIS TAYLOR 250.847.3692 OR LOIST@BULKLEY.NET IF YOU HAVE ANY QUESTIONS ON HOW TO PARTICIPATE IN THIS AUCTION.

THANK YOU TO OUR AUCTIONEER; CHARLIE MCCLARY, OUR OFFICE STAFF, BID CATCHERS,  
RING STAFF AND ANNOUNCER!

A SPECIAL THANK YOU TO: EVERYONE WHO BID AND MADE OUR AUCTION SUCCESSFUL.

## DIVISION D: DRAFT HORSE

**Show Secretary:** Sally Koch

**Announcer:** Jenny de Jong

**Judge:** Shane Patterson, Dawson Creek, BC

**Contact:** Glen Kerr 250.846.5434/

Anika Gattiker 250.846.5494

We are again sponsoring a **stall-decorating contest**. We urge each exhibitor to take part. Prizes will be awarded to all participants.

### GENERAL RULES

- 1) **Entries will close Saturday, August 17<sup>th</sup>, 2019. All entries to include full payment for: events, stabling, camping etc.** You may submit your entries online at [bvfair.ca](http://bvfair.ca), or if you use the draft horse entry form, please note that correctly completed forms will be given priority. All entry forms must be signed in order to validate the entry. Unsigned forms will not be processed. Mail entries to **BV Exhibition, Draft Horse Division, Box 2281, Smithers, BC, V0J 2N0**. Post entries will be accepted up to 12 hours before show at double entry fee.
- 2) **BC Championship Pull limited to 18 entries by order of entries received. All teams entering the BC Championship Pull must enter at least two non-pulling classes (1 halter class/1 driving event or 2 driving events).**
- 3) Entry fee is 10% of first prize money. Pull: \$50 per team. Single Pull: \$25.
- 4) Every effort will be made to have the prize money mailed out within 30 days after the end of the exhibition.
- 5) **All horses must be stalled during fair hours.** Tie stalls \$10/weekend, Box stall \$15/weekend +GST. Box stalls will be reserved for stallions and mares with foals. Stalls will be allotted primarily in order of entries. \$20/tie stall, \$40/box stall will be deducted from prize money if stalls are left dirty.
- 6) Exhibitors must purchase an Exhibitor's Pass at \$15 per exhibitor. On-ground camping fee is \$30. All fees must accompany entry forms. NSF cheques: \$25 service charge.
- 7) If there is only one entry in a class, prize money will be paid as awarded by judge. If judged as 1<sup>st</sup> Place, payout will be paid accordingly.
- 8) Age of horses shall date from January 1<sup>st</sup> of the year in which they are foaled.
- 9) All animals entered in registered classes must be recorded in the record or stud book specified. Registration papers must be **attached to the entry form. No exceptions.** Current year animals do not require registration certificates but proof of eligibility must be attached to the entry form. No exceptions.
- 10) Horses must be named: "entry" is not acceptable.
- 11) No horse competing in any class admitted to the show ring shall leave such ring until all prizes for the class shown are awarded.
- 12) Proper attire required for all classes.
- 13) Any horse not sufficiently under control shall be asked to leave the ring.
- 14) All foals must be exhibited on the halter. Mares may accompany foals into the ring if desired by the exhibitor.
- 15) Header permitted in hitch classes.
- 16) Judge's decision is final.
- 17) Get of Sire: registered sires only. Entries to be made in the name of the Sire.

- 18) Produce of Dam: registered dams only. Entries to be made in the name of the Dam. **Note:** All animals shown in a group class must have been shown in a previously offered breeding class.
- 19) The Pulls will be run in accordance with the Draft Horse Pull rules listed in Division D6.
- 20) There will be no driving on roads or in pedestrian areas.
- 21) The committee reserves the right to refuse horses in poor body condition. Spot checks by a veterinarian for contesting teams can also be requested by the Show Committee.
- 22) Any item not covered in these rules will be ruled on by the Heavy Horse Show Committee.
- 23) No vehicle traffic between 10 am and 6 pm.

### **D1: Halter Classes Grade Draft Horses, All Breeds**

Friday, August 23<sup>rd</sup>, 2019, 12 Noon in Rodeo Ring  
For any recognized draft horse breed, grade only.

**Prize Money:** 1<sup>st</sup> \$40; 2<sup>nd</sup> \$30; 3<sup>rd</sup> \$20; 4<sup>th</sup> \$10

- 1) Broodmare, with foal at side
- 2) Foals and yearlings, any sex
- 3) Light draft mare or gelding, 1600 lbs. and under
- 4) Heavy draft mare or gelding, over 1600 lbs.
- 5) Grand and Reserve Champion unregistered horse (1<sup>st</sup> and 2<sup>nd</sup> place winners from above classes, ribbons only)
- 6) Junior showmanship (Ribbons only). Open to juniors only. A junior is anyone who has not passed his/her 18<sup>th</sup> birthday as of January 1<sup>st</sup> of the current year.
  - i. Appearance: 20 points
  - ii. Showing the animals: 60 points
  - iii. Appearance of the animal: 20 points
- 7) Mule in halter
- 8) Senior showmanship (Ribbons only)
- 9) Junior mane and tail decorating. 30 minutes allowed. (Ribbons only)

### **D2, D3 & D4: Registered Halter Classes**

**Prize Money:** 1<sup>st</sup> \$80; 2<sup>nd</sup> \$75; 3<sup>rd</sup> \$60; 4<sup>th</sup> \$50;

D2 — Belgians

D3 — Any other breed

D4 — Percherons

Bel / AOB / Per

**2-01/3-01/4-01** Geldings any age

**2-02/3-02/4-02** Broodmare, must be shown with foal at side

**2-03/3-03/4-03** Foal of current year, filly or colt

**2-04/3-04/4-04** Stallion foaled in 2018

**2-05/3-05/4-05** Stallion foaled in 2017

**2-06/3-06/4-06** Junior Champion & Reserve Stallion (1<sup>st</sup> & 2<sup>nd</sup> from classes 2-03 to 4-05, ribbons only)

**2-07/3-07/4-07** Stallion foaled in 2016 or earlier

**2-08/3-08/4-08** Grand Champion & Reserve Stallion (1<sup>st</sup> & 2<sup>nd</sup> from classes 2-06 to 4-07, ribbons only)

**2-09/3-09/4-09** Filly foaled in 2018

**2-10/3-10/4-10** Filly foaled in 2017

**2-11/3-11/4-11** Junior Champion & Reserve Filly (1<sup>st</sup> & 2<sup>nd</sup> from classes 2-03, 2-09, 2-10, 3-03, 3-09, 3-10, 4-03, 4-09, 4-10, ribbons only)

**2-12/3-12/4-12** Filly foaled in 2016

**2-13/3-13/4-13** Yeld mare foaled in 2015 or earlier

**2-14/3-14/4-14** Senior Champion & Reserve Mare (1<sup>st</sup> & 2<sup>nd</sup> from classes 2-12 to 4-13, ribbons only)

**2-15/3-15/4-15** Grand Champion & Reserve Mare (Junior & Reserve + Senior & Reserve, ribbons only)

**2-16/3-16/4-16** Produce of Dam — Ribbons only

**2-17/3-17/4-17** Get of Sire — Ribbons only

**2-18 Supreme Champion of Show** (Grand Champion & Reserve Stallion and Grand Champion & Reserve Mare — All Breeds) — Ribbons only

**2-19 Costume Class \*NEW\*** open to any recognized draft horse breed, grade or registered. Horse can be shown in hand or ridden.

### **DRAFT HORSE LOG SKIDDING RULES**

No multiple uses of teams. Teamster may enter as many teams as he or she desires as long as entry fees are paid for each team. The judge will meet with teamsters prior to competition to go over the rules.

#### THE COURSE:

- Parallel Lines 32 ft. apart
- End lines or closed end 16 ft. from last pylon.
- Distance between pylons to be 16 ft.
- Log to be 16 ft. long. If pylons are moved during contest, the Judge to reset. Timing optional.

#### PENALTIES:

Each teamster starts contest with **100 points**. 5 points will be deducted for each of the following:

- 1) Team steps on or over line
- 2) Teamster steps on or over line
- 3) Team, teamster or rigging touches line or pylons
- 4) Logs touch pylons or sideline

#### DISQUALIFICATION:

- 1) Riding on logs.
- 2) Arguing with the Judge.
- 3) Swearing, whipping, slapping or rippling of reins.
- 4) If off course or breaking pattern.
- 5) Pre-marking of stops.
- 6) Passing of lines over pylons or walking on the wrong side of the pylon (pylons are to be thought of as tall trees).

#### STOPS:

On stops of 3 feet, 2 feet and 1 foot, a penalty point will be assessed for each inch under or over on each stop; teamster will be scored to the closest inch. Only one pull allowed for each stop and movement of logs constitutes a pull.

#### SCOREKEEPING:

Total points will be announced after each team has gone through the course. The team with the highest number of points wins. In the case of a tie, the judge will make the decision. **THE JUDGE'S DECISION IS FINAL.**

### **D5: Events**

Saturday, August 24<sup>th</sup>, 2019, 9 am in Rodeo Ring  
Weigh-in, 8 am

**5-02** Light Draft Team on wagon (3200 lbs and under) hitched to a suitable vehicle. (Judge and Ring Steward's instructions.)

**Prize Money:** 1<sup>st</sup> \$100; 2<sup>nd</sup> \$75; 3<sup>rd</sup> \$50; 4<sup>th</sup> \$25

**5-03** Heavy Draft Team on wagon (over 3200 lbs) (same requirements as class 5-02)

**Prize Money:** 1<sup>st</sup> \$100; 2<sup>nd</sup> \$75; 3<sup>rd</sup> \$50; 4<sup>th</sup> \$25

**5-04** Junior Driver (same requirements as class 5-02)

**Prize Money:** 1<sup>st</sup> \$60; 2<sup>nd</sup> \$40; 3<sup>rd</sup> \$30; 4<sup>th</sup> \$20

**5-05** Junior Cart Class (Judge and Ring Steward's instructions)

**Prize Money:** 1<sup>st</sup> \$60; 2<sup>nd</sup> \$40; 3<sup>rd</sup> \$30; 4<sup>th</sup> \$20

**5-06** Ladies' Cart Class (Judge and Ring Steward's instructions)

**Prize Money:** 1<sup>st</sup> \$60; 2<sup>nd</sup> \$40; 3<sup>rd</sup> \$30; 4<sup>th</sup> \$20

No cross entries (may be waived at Show Committees discretion)

**5-07** Gentlemen's Cart Class (Judge and Ring Steward's instructions)

**Prize Money:** 1<sup>st</sup> \$60; 2<sup>nd</sup> \$40; 3<sup>rd</sup> \$30; 4<sup>th</sup> \$20

**5-08** Junior Log Skidding Competition — open to any draft team of horses (Rules and instructions will be posted)

**Prize Money:** 1<sup>st</sup> \$60; 2<sup>nd</sup> \$40; 3<sup>rd</sup> \$30; 4<sup>th</sup> \$20

**5-09** Log Skidding Competition — open to any draft team of horses (Rules and instructions will be posted)

**Prize Money:** 1<sup>st</sup> \$100; 2<sup>nd</sup> \$75; 3<sup>rd</sup> \$50; 4<sup>th</sup> \$25

**5-10** Single Horse Pull (Rules and instructions will be posted)

**Prize Money:** 1<sup>st</sup> \$300; 2<sup>nd</sup> \$200; 3<sup>rd</sup> \$100

**Sunday, August 25<sup>th</sup> 2019, 8:30 am in the Rodeo Ring**

**5-11** Teamster Competition—hitched to a suitable vehicle (Instructions will be posted)

**Prize Money:** 1<sup>st</sup> \$100; 2<sup>nd</sup> \$75; 3<sup>rd</sup> \$50; 4<sup>th</sup> \$25

No cross entries (may be waived at Show Committees discretion)

**5-12** Ladies' Team Driving

**Prize Money:** 1<sup>st</sup> \$100; 2<sup>nd</sup> \$75; 3<sup>rd</sup> \$50; 4<sup>th</sup> \$25

**5-13** Team of Registered Mares. Proof of registration required. (Judge and Ring Steward's instructions)

**Prize Money:** 1<sup>st</sup> \$100; 2<sup>nd</sup> \$75; 3<sup>rd</sup> \$50; 4<sup>th</sup> \$25

**5-14** Unicorn Hitch (Judge and Ring Steward's instructions)

**Prize Money:** 1<sup>st</sup> \$100; 2<sup>nd</sup> \$75; 3<sup>rd</sup> \$50; 4<sup>th</sup> \$25

**5-15** Four-Horse Hitch—exhibitors may combine to make up a four-horse hitch. (Judge and Ring Steward's instructions)

**Prize Money:** 1<sup>st</sup> \$100; 2<sup>nd</sup> \$75; 3<sup>rd</sup> \$50; 4<sup>th</sup> \$25

**5-16** Six-Horse Hitch. Same requirements as class 5-16

**Prize Money:** 1<sup>st</sup> \$100; 2<sup>nd</sup> \$75; 3<sup>rd</sup> \$50; 4<sup>th</sup> \$25

**5-17** Chore Team Fun Class

**Prize Money:** 1<sup>st</sup> \$100; 2<sup>nd</sup> \$75; 3<sup>rd</sup> \$50; 4<sup>th</sup> \$25

## **DE: BC Championship Pull**

### **(NEW TIME)**

Sunday, August 25<sup>th</sup>, 2019, 12 noon, in the Rodeo Ring

**Pull Committee:** Anika Gattiker, Bryan Semeschuk, Harry Houlden, and the judge

### **Prize Money:**

1<sup>st</sup> \$2,000; 2<sup>nd</sup> \$1,400; 3<sup>rd</sup> \$700; 4<sup>th</sup> \$500; 5<sup>th</sup> \$400; 6<sup>th</sup> \$300; 7<sup>th</sup> \$250; 8<sup>th</sup> \$200; 9<sup>th</sup> \$150; 10<sup>th</sup> \$100

- Limited to 18 entries by order of entries received.
- Minimum \$100 for one legal pull.
- Open to any team of draft horses.
- Rules will be posted.

• 1<sup>st</sup> place prize sponsored by **Shooting Star Amusements**

### **PULL REGULATIONS**

- 1) Pull must be held in a secure area where general public is protected.
- 2) Only entered competitors, hookers, headers and officials allowed in pulling area.
- 3) Boundary lines 16 ft. apart. Length of pull 14 ft.
- 4) Off set double trees and neck yokes are allowed.
- 5) Each teamster is allowed two helpers. If helpers coach or interfere in any way, team will be disqualified. Header must leave the pulling boundary lines; teamster and hooker must remain behind hindquarters of horse.
- 6) Either teamster or hooker **may ride front** of the boat. There shall be **no riding** in the boat.
- 7) Once the team has been hooked to the boat, they must stay between the boundary lines.
- 8) Team allowed two tries to move the boat 14 feet. An unsuccessful attempt by the teamster to start the team constitutes one try. A boat moved six inches forward constitutes a pull.
- 9) Line rule waived for the first 3 pulls.
- 10) The pin and chain laid out flat measures 14 feet. Pin must be out completely to qualify as a pull.
- 11) Deliberate stalling will result in disqualification. Judge to warn teamsters once.
- 12) Deliberate jerking of load is prohibited. Team will be disqualified and will revert to previous weight pulled. Judge will warn teamsters once.

13) Whipping, slapping of lines at any time will result in disqualification and will revert to previous weight pulled.

14) There must be two linesmen and a pin man to assist the judge. The linesmen have the authority to tell the judge of any infractions and the judge must act upon their information.

15) A teamster may ask the judge to center the boat before hooking. If there are no means available to center boat, the judge may waive the line rule and ask the teamster to center the boat during the pull.

16) If a break in harness or equipment occurs there will be a time limit of five minutes to fix the break and complete the pull. If a teamster forfeits the pull or a five-minute time limit expires on the pull at which the breakage occurred he must pull the next weight the full distance or the weight recorded goes back to the previous completed pull.

17) Teamsters are not to argue with or harass the judge. To do so will result in instant disqualification and forfeiture of all prizes. Any complaint should be made to the pull committee.

18) All teams will be weighed on the same scale prior to the pull.

19) After a meeting of pull officials an unmanageable team may be disqualified.

20) Weight for each lift will be decided by pull committee.

21) Each team must pull each additional weight. No double lifting to be allowed except on the final pull the teamster can decide the weight.

22) Talking or shouting is permitted but not the use of profanity.

23) Three tries to hook the boat, otherwise disqualified and weight reverts to previous pull.

24) Pulling order heaviest to lightest unless it is not feasible.

25) Pulling direction should be changed if the horses can't complete the pull within the length of the lines.

26) One legal pull is required for hook-up money.

**27) JUDGE'S DECISION IS FINAL**

## **LAURIE STOREY MEMORIAL TROPHY**

In memory of Laurie Storey and Charlie Houlden

The Laurie Storey Memorial Trophy, donated by the **Bob Storey Family**, is presented to the best overall teamster at the conclusion of the pull on Sunday.

### **2018 WINNER**

#### **BRYAN SEMESCHUK**

Judging will be done by the judge and ring steward during the whole weekend. They will

be looking for, but not limited to, the following: animal care, willingness to help others, presentation in the ring and overall attitude. The trophy is not restricted to any one age group.

#### **POTLUCK**

There will be a potluck supper for the Draft Horse Exhibitors on Sunday after the pull.

### **DRAFT HORSE SPONSORS**

#### **GRAND CHAMPION SILVER**

- Shooting Star Amusements

#### **GOLD**

- 4 Us 2 Fix
- BV Electric
- North Country Rentals
- Smithers Lumber Yard
- Vandergaag Construction

#### **SILVER**

- Action Services
- BV Home Centre
- Empty Acres Enterprises
- Glacier Electric
- Hy-Tech Drilling
- L.B. Paving
- Marlina Repair

- Silverking Helicopters
- TAGH Holdings

- Summit Reforestation

#### **BRONZE**

- All West Glass
- B&T Wagon & Sleigh Rides
- Babine Animal Hospital
- Bulkley Valley Insurance Services
- C&C Excavating
- Daybreak Farms Ltd.
- Gattiker Farm
- Hank & Jenny DeJong
- Northwest Kitchen Centre Ltd.
- Wally Storey
- Tyhee Forestry Consultants



# DIVISION S: LOGGERS' SPORTS



Welcome to all our new competitors and welcome back to those that came last year! The 2019 BVX Loggers' Sports is an affiliated event with the Canadian Loggers Sports Association and will be holding several Canadian Championship events. There is also a new attraction at the show – we have a world class wood carver, an original and creative artist, who will be carving works to be auctioned during the Loggers' Sports!

The main events will be held on Saturday, August 24<sup>th</sup> 2019. There will be demonstration events and three fun events to kick start the Loggers' competition. Please feel welcome to swing by the site on Friday, August 23<sup>rd</sup>, 2019 from 12-5pm to practice, view or compete in the festivities!

## Contact:

Lars Hobenshield (lars\_hob@hotmail.com)

## Division Website:

(Facebook site name "BVX Loggers' Sports")

## Main Judge / Announcer:

Stirling Hart

## Prize Money:

*Team Relay event:*

1<sup>st</sup> \$600, 2<sup>nd</sup> \$400, 3<sup>rd</sup> 200

*Novice and Intermediate Championship events:*

1<sup>st</sup> \$200, 2<sup>nd</sup> \$120, 3<sup>rd</sup> \$80, 4<sup>th</sup> \$60, 5<sup>th</sup> \$40

*Open and Ladies Championship events:*

1<sup>st</sup> \$300, 2<sup>nd</sup> \$120, 3<sup>rd</sup> \$80, 4<sup>th</sup> \$60, 5<sup>th</sup> \$40

*Open and Ladies events:*

1<sup>st</sup> \$200, 2<sup>nd</sup> \$120, 3<sup>rd</sup> \$80, 4<sup>th</sup> \$60, 5<sup>th</sup> \$40

*Kids' events:* 1<sup>st</sup> \$80, 2<sup>nd</sup> \$60, 3<sup>rd</sup> \$30, 4<sup>th</sup> \$20, 5<sup>th</sup> \$10

*Friday events:* 1<sup>st</sup> \$20, 2<sup>nd</sup> \$10, 3<sup>rd</sup> \$5

**Entry Fee:** \$5/event

**Entry Deadline:** August 17<sup>th</sup>, 2019

Pre-Registration is required for the main events on Saturday the 24<sup>th</sup>, no pre-registration required for the events on Friday the 23<sup>rd</sup>. You can register online, by mail or in person at the Bulkley Valley Exhibition office. Registration for the Loggers' Sports events will close on Saturday, August 17<sup>th</sup>, 2019.

**Pre register for more than 3 events** and your Exhibitors pass is covered by our Sponsor "**Doing It Right Home Inspections**"

## Rules and information

Wood used for chainsaw event will be hybrid white spruce; wood for crosscut events will be western white pine. Trembling aspen will be used for chopping. CANLOG rules are in effect (canlog.com).

## Which events can I enter?

Kids' events are open to kids (future loggers?) aged 3-6 or 5-12. Adult competitors are eligible for any of the appropriate Open and Ladies events. These events are not limited to veteran competitors, though for safety reasons you should have previous experience before entering chainsaw or chopping competitions. Friday Fun Events are open to all – if you've never tried Loggers' Sports, this is your chance to check it out and see!

For Canadian Championship events, the Novice Championship class is for new competitors who haven't won this Novice Championship event more than twice anywhere in Canada. If you have won 3 Novice Championship events, you move up to Intermediate Championship and then to Open Championship Events. So if you're a local guy or gal who doesn't compete nationally, you might have a lot of fun and a chance of winning with the Novice or even Intermediate Championship events. In the Open Championship, the competition will be a tad stiffer!

Loggers' Sports office opens at 9:00am on August 24<sup>th</sup> 2019 and the main competition begins at 10:00am with Kids' Loggers sports, followed by Adult Novice, Intermediate, Ladies and Open events. Events Schedule will be posted at the Loggers' Sports site. Competitors are encouraged to bring their own equipment. Loaner equipment will be available if needed but please do not rely on loaner equipment. Please bring bucking pants and steel-toed footwear for chainsaw events.

CanLog memberships are required for the Men's, Mixed and Ladies' Loggers' Sports Events. They will be available for purchase Friday, August 23<sup>rd</sup> 12-5pm and Saturday August 24<sup>th</sup> 9-10am.

## FRIDAY FUN EVENTS

Late entries until 2pm, Fun Events start at 3pm.

- 001 Axe Throw
- 002 Dot Split
- 003 Double Buck

## SATURDAY EVENTS

### S1: Novice Events

- 101 Double Buck (Novice Canadian Championship)
- 102 Obstacle Pole Buck (Novice Canadian Championship)

### S2: Intermediate Events

- 201 Hot Saw 100cc (Intermediate Canadian Championship)

### S3: Open Adult Events

- 301 Choker Race
- 302 Stock Saw
- 303 Hotsaw (140CC Max)
- 304 Underhand Chop handicap
- 305 Axe Throw
- 306 Single Cross Cut
- 307 Jack and Jill
- 308 Birling
- 309 Team Relay
- 310 Obstacle Pole Buck
- 311 Nail Drive (Canadian Championship)

### S5: Ladies Events

- 501 Stock Saw (Ladies Canadian Championship)
- 502 Underhand Chop
- 503 Axe Throw
- 504 Double Cross Cut
- 505 Choker Race
- 506 Obstacle pole buck (Ladies Canadian Championship)

### S6: Kids' Events (age 3-6)

- 601 Sawdust Goodie Bag Dig (no entry fee/limited to 30 spots)

### S7: Kids' Events (age 5-12)

- 701 Nail Drive
- 702 Choker Race—with a rope
- 703 Swede Saw
- 704 Birling

## Order of Show

Saturday, August 24<sup>th</sup> at the Loggers' Sports Area:

- 10:00-10:15am: Competitors, judges and volunteers meeting.
- 10:15-11:15am: Kids' Events (Division S6) followed by Kids' Events (Division S7)
- 11:30am-5:00pm: Novice, Intermediate, Open and Ladies events (Division S1-S5)

Times and events are subject to change and will be posted at the Loggers' Sports Area on Saturday, August 24.

## LOGGERS' SPORTS SPONSORS

### DIAMOND

- Wilson Bros. Enterprises Ltd.

### PLATINUM

- Sullivan Motor Products
- Hankin Peak Contracting
- Licence to Cut Contracting
- Monster Industries
- West Fraser Mills

### PLATINUM

- Great West Equipment

### GOLD

- Babine Truck and Equipment
- Blastpro Construction Ltd.
- Canadian Helicopters
- Doing it Right Home Inspections
- John Himech Logging Ltd.
- Jon Henry Contracting

### GOLD

- North Country Rentals
- Pacific Truck and Equipment
- Pro-Tech Forest Resources Ltd
- Schippers Creek Contracting Ltd
- Tahltan Outfitters
- Tahtsa Timber Ltd
- Vanderhoof and District Co-op

### SILVER

- Andy Meints Contracting Ltd
- Finks Sawmills Ltd.
- Harry Houlden Contracting
- Ron Groot Contracting
- Morice Forest Salvage Society
- Summit Reforestation
- BRONZE**
- Aqua North Plumbing Ltd.
- Northwest Fuels Ltd

### BRONZE

- Morice Forest Salvage Society
- Randy's Image Design
- Smithers Feed Store
- Smithers Lumber Yard
- Smithers Sausage Factory
- SMS Equipment Inc.
- Willow Grove Golf Course



our  
COMMUNITY  
*matters*  
at  
**PHARMASAVE®**

## Serving our Friends & Family in the Bulkley Valley for Over 40 Years!

- Medication Reviews
- Medication Blister Packing
- Travel Vaccinations
- 1 Hour Digital Photo Lab
- Passport Photos
- Full Services Cosmetics
- Home Healthcare Supplies & Rentals
- Giftware

\*Services vary by location.  
Contact the location nearest you  
for more information.

*Congratulations to the BV Exhibition  
for all the years of tradition!*

### **Smithers Pharmasave**

3752 – 4th Avenue 250-847-4474

Mon – Fri: 9am – 9pm Sat: 9am – 6pm Sun: 10am – 5pm

### **Smithers Main Street Health Centre**

1211 Main Street 250-847-8750

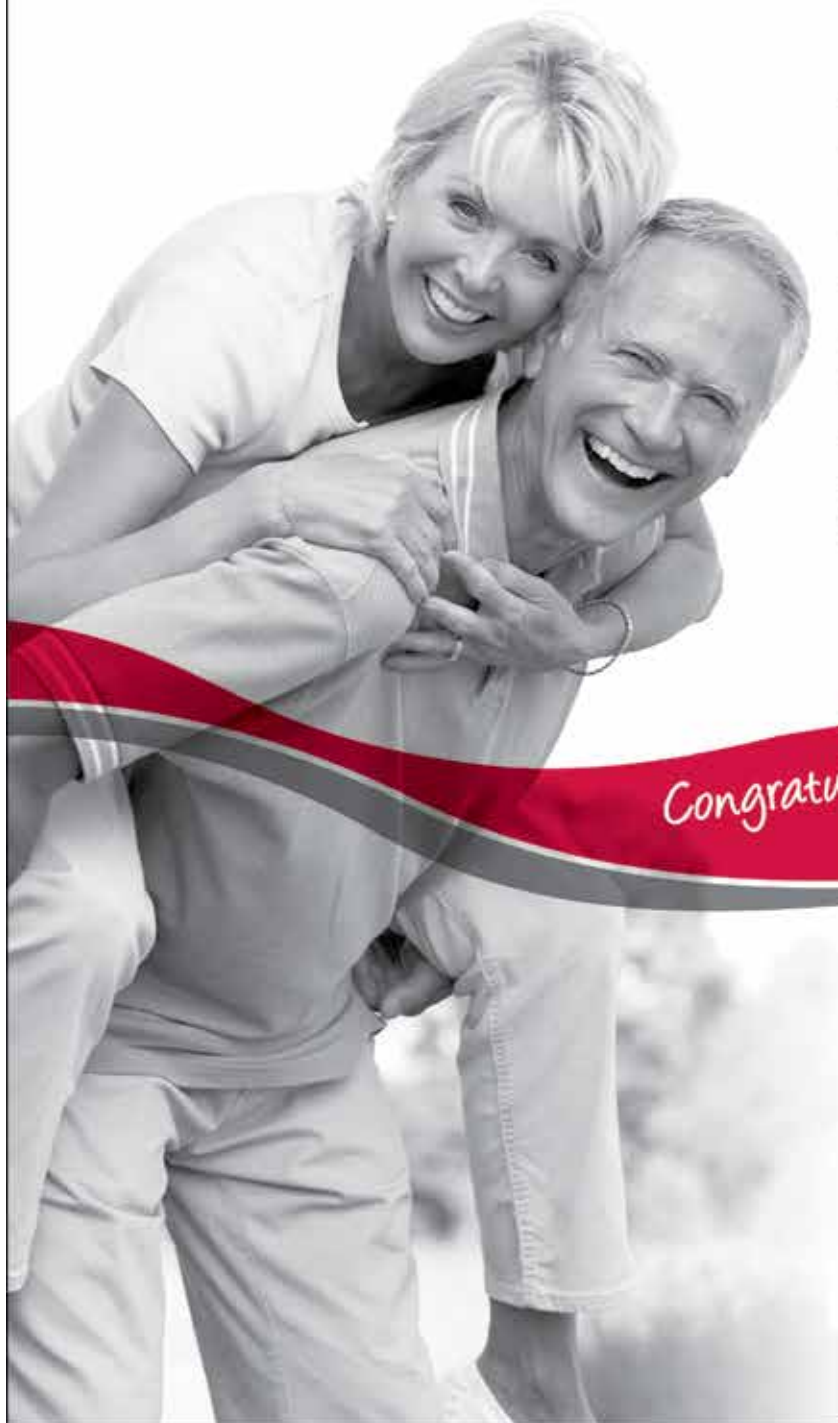
Mon – Fri: 9am – 6pm Closed weekends & holidays

### **Houston Pharmasave**

3429 – 10th Street 250-845-3700

Mon – Sat: 9am – 6pm Closed Sundays & holidays

[www.pharmasave.com](http://www.pharmasave.com)





# NATURE'S PANTRY

*Your Neighbourhood Hub For Health*

3744-1st Ave. Smithers, BC V0J 2N0  
(250) 847-3943

naturespantrysmithers@gmail.com

**OPEN**

Tuesday to Saturday / 9:00 am to 5:30 pm

**WELCOME  
TO THE FAIR**



Specializing in natural supplements,  
bulk foods, health and beauty aids and  
gluten-free products



**castle**  
building centres®



**BULKLEY VALLEY HOME CENTRE**

Telkwa: 250.846.5856 Houston: 250.845.7606  
bvhome.ca

## **DIVISION B: SPECIAL COMPETITIONS**

### **B1: Looking Back in Time**

**Location:** Lisbeth Johnstone Hall

**Entry Fee:** \$2

**Entry Form:** Please use General Entry Form  
**Deadline for entry forms is August 10<sup>th</sup>, 2019.**

**Prize Money:** 1<sup>st</sup> \$8; 2<sup>nd</sup> \$6; 3<sup>rd</sup> \$4 Ribbons for 1<sup>st</sup> to 3<sup>rd</sup>  
**01 Old Kitchen Tools**

### **B2: 2019 BC Association of Agricultural Fairs & Exhibitions**

**ENTRY DEADLINE:** Saturday, August 10, 2019

#### **MEMBER'S CHOICE CATEGORIES**

The BCAAFE will award an additional \$50 gift card to the exhibitor of the winning entry, at the BCAAFE Convention. Winner will be chosen by delegates at the convention. Winning entries in local competition must be available for the BC Fairs Conference in October 17-19, 2019, for Provincial Competition. BV Fair will transport the entry if it is available.

**Entry Fee:** \$2 **Prize Money:** 1<sup>st</sup> \$30, 2<sup>nd</sup> \$20, 3<sup>rd</sup> \$10

**01 2019 BCAAFE Member's Choice Category #1**  
**Arts & Crafts:** Youth (12 years and under)

#### **DECORATED BIRD HOUSE**

The Birdhouse may be either handmade or kit, wood or mixed media. Overall Size: No larger than 8" x 8" x 10" tall. Exhibitor may use embellishments ie: buttons, bows, ribbons, bells, paint, etc.

**02 BCAAFE Member's Choice Category #3**

**Division B – Open to all ages**

#### **Sewing or Weaving: TABLE RUNNER**

Agricultural Theme 13" wide x 31" long

Exhibitor may use embellishments ie: buttons, bows, ribbons, bells, etc and any quilting, weaving or mixed media style.

**03 BCAAFE Member's Choice Category #1**

**Division B – Open to all ages**

**Item:** ALTERED PHOTOGRAPHY

**Theme:** Farm Animals

**Size:** A set of two images 5"x7", landscape orientation, 1 original image, 1 altered image. Provide the original (before) and the altered (after) photograph. Images must be mounted securely to a 16" high x 11' wide poster board. Alter photograph using any technique – photo painting, colouring, text additions, etc.

### **B3: Scarecrow Contest**

**Theme:** "Into the Future and Back to our Roots"

**Entry fee:** \$2

**Prize Money:** 1<sup>st</sup> \$40; 2<sup>nd</sup> \$20; 3<sup>rd</sup> \$15

**ENTRY DEADLINE:** Saturday, August 10<sup>th</sup>, 2019

Use General Entry Forms. Exhibits will be accepted 10am-4pm, Wednesday August 21<sup>st</sup>, 2019. Please reclaim your entry on Sunday, August 25<sup>th</sup> after 4 pm.

**01 Into the Future Adult (16 & up)**

**02 Back to our Roots Adult (16 and up)**

**03 Into the Future Youth (15 and under)**

**04 Back to our Roots Youth (15 and under)**

**Sponsored by Prestige Hudson Bay Lodge**

### **B4: Business Competitions**

**sponsored by BVAIA**

**ENTRY DEADLINE:** Saturday August 17<sup>th</sup>, 2019

Use General Entry Forms

**001 Store Decorating**

**Entry Fee:** Free

**Prize:** 1<sup>st</sup> Place Plaque and Prizes

Show your community spirit and decorate your store with this year's BV Exhibition Theme – "Into the Future and Back to Our Roots". Stores will be judged on use of theme and creativity. Judging will be on Wednesday before the parade.

### **B5: BV Exhibition Theme**

**Competitions sponsored by BVAIA**

Open to all artistic mediums – sculpture, painting, sewing, paper mache, sketching etc. Use your creativity and talent to showcase this year's theme. Items will be judged on theme messaging and creativity.

**"Into the Future and Back to Our Roots"**

**ENTRY DEADLINE:** Saturday August 10<sup>th</sup>, 2019

Use General Entry Forms

Exhibits will be accepted Friday, August 16<sup>th</sup>, 5 – 9 pm; Saturday, August 17<sup>th</sup>, 10 am – 2 pm. Please reclaim your entry on Sunday, August 25<sup>th</sup> after 4 pm.

**001 Indoor Theme display**

**Entry fee:** \$2

**Prize Money:** 1<sup>st</sup> \$50, 2<sup>nd</sup> \$30, 3<sup>rd</sup> \$20

Items cannot be larger than 3'x3' and may be displayed throughout the exhibition grounds (indoor locations only).

### **B6: Bee Board Art** sponsored by **BVAIA**

**ENTRY DEADLINE:** Saturday, August 10<sup>th</sup>, 2019

Pick up a ready-to-paint Giant Honeybee cut-out from the BVX office any time after July 1<sup>st</sup>. Paint and decorate any way you like – realistic, cartoonish, abstract... stick on a pair of wings...or a hundred baby bees...your choice! Finished Honeybees will be accepted Friday, August 16<sup>th</sup>, 5-9pm, and Saturday August 17<sup>th</sup>, 10am-2pm.

**001 Bee Board - painted 1 side**

Items will be judged on theme messaging and creativity.

**Entry fee:** \$10

**Prize Money:** 1<sup>st</sup> \$50, 2<sup>nd</sup> \$30, 3<sup>rd</sup> \$20

### **B9: Adult Lego Contest Art**

**sponsored by Big Smiles Toy Store**

**Entry Fee:** \$2

**ENTRY DEADLINE:** Saturday, August 10<sup>th</sup>, 2019

Use General Entry Forms

**001 Adult Lego, max size base 12"x12", max height 24"**

Exhibits will be accepted August 21<sup>st</sup> between 10 am and 4 pm. Please reclaim your entry on Sunday, August 25<sup>th</sup> after 4 pm.

**Prize Money:** 1<sup>st</sup> \$20, 2<sup>nd</sup> \$10, 3<sup>rd</sup> \$5

## **ANTIQUE TRACTOR DISPLAY**





## TRAINER OF THE NORTH

### DEMONSTRATION EVENT

Followers of the BVX Trainer of the North Challenge will be excited to see our new Trainer of the North Demonstration Event, happening Thursday-Saturday in the Indoor Arena. Severin Pederson, three-time winner of the TON Challenge, will be working with two-year-old horses over three days, demonstrating what he does to get a young horse ready to start a training program.

Based in Vancouver Island, Severin's 3R's Training Program (Reward the Right Response) has been helping horses and riders develop a true partnership for over 20 years. He holds many clinics at his family ranch and across the country throughout the year and is known as the "go to guy" when horse owners have a problem they cannot solve. His natural talent for horsemanship is reflected in his passion to educate, motivate and inspire horses and riders. Severin also works in the television and film industry as a stunt rider and wrangler – some of his projects include *Strange Empire*, *The 100* and *DC's Legends of Tomorrow*.



### TRAINER OF THE NORTH DEMO SPONSORS

- BV Credit Union
- Smithers Feed Store
- Roy Henry Vickers
- Bearclaw Lodge at Kispiox River
- Northern Saddle Club
- Northwest Kitchen Centre
- Northwest Chapter of Backcountry Horsemen
- River Rock Ranch

# On the Claude Dohler Stage

this year is...



Come and dance the night away with **Canada's Tribute to ABBA: ARRIVAL** on **Thursday at 9pm!**



It's **Country Night** with **Kenny Hess** on **Friday at 9pm!**



Rounding off the weekend is **Mark Perry & Northwest** on **Saturday at 8:30pm!**

## COME AND CHECK OUT THE KIDS AREA!!



**THE CANINE STARS!**



**CLINTON GREY  
THE MAGICIAN!**



**UNCLE CHRIS THE CLOWN!**



**ZUCCHINI RACES!**



**BVX  
PETTING  
ZOO!**

## ... AND MUCH MORE!!

TIMES ARE SUBJECT TO CHANGE

## **DIVISION N: KIDS' DOG SHOW**

Open to all children aged 12 years and under.

**NEW CLASS:** Oldest Dog - in honour of the 100<sup>th</sup> Annual BVX!

**Entry fee:** 50¢ Use General Entry Form

**Entry Deadline:** August 17<sup>th</sup>, 2019

**Prize money:** 1<sup>st</sup> \$2.50; 2<sup>nd</sup> \$1.50; 3<sup>rd</sup> \$1

Ribbons and Prizes to all entries. Prize money, Prizes and ribbons sponsored by **G. Ronald Toews, Smithers Feed Store, Kelly Jones; Investor Group Lychak Brothers Trucking.**

**Show Time:** Sunday, August 25<sup>th</sup>, 2 pm in the Kids Zone

### **RULES:**

- The dog(s) entered must be the family property of the entrant. Children must be capable of controlling their dog.
- Do not bring any female dog on the fairgrounds if she is in any stage of heat.
- No dogs under 6 months of age (for health reasons).
- All dogs on the grounds must display a fair-issued permit and be on a leash at all times. Any uncontrolled dogs will be removed. This policy adheres with the Town of Smithers Dog Leash Bylaw and will be strictly enforced.
- Oldest Dog entries must show evidence of age

- 01** Best dressed dog-handlers aged 1–6 years
- 02** Best dressed dog-handlers aged 7–12 years
- 03** Biggest dog
- 04** Smallest dog
- 05** Longest tail (not eligible from class 03)
- 06** Shortest tail (not eligible from class 04)
- 07** Curliest tail
- 08** Best Trick-handlers aged 1–6 years
- 09** Best Trick-handlers aged 7–12 years
- 10** Most unusual dog
- 11** Best controlled dog walking on a leash, handlers aged 6 & under
- 12** Best controlled dog walking on a leash, handlers aged 7-12 years
- 13** **NEW!** Oldest Dog



***Award Winning !***

# **CAFE DEL SOL**

## ***Mexican Food***

***10% discount for Service Personnel  
Military - Fire - Police - Ambulance  
Veterans receive FREE Coffee !***

***Breakfast - Lunch - Dinner***  
***located in the fairgrounds mall***

# GENERAL ENTRY FORM - 2019

HALL EXHIBITS and SPECIAL COMPETITIONS

Entry Deadline August 10th

Hall Division Division E (Vegetables & Flowers) Only August 17

Exhibitor's Name: \_\_\_\_\_ Date of Birth \_\_\_\_\_ MM/DD/YYYY  
(if no date entered adult classes and fees will apply)

Mailing Address: \_\_\_\_\_

Postal Code \_\_\_\_\_ Phone \_\_\_\_\_ Email \_\_\_\_\_

Have you exhibited at the BVX in the past? Yes \_\_\_\_\_ No \_\_\_\_\_

Are you competing as a Family Yes \_\_\_\_\_ No \_\_\_\_\_ If yes, Family Group Name: \_\_\_\_\_

*Use a separate entry form for each exhibitor within the family group. Enter this Family group name on all family member forms*

Fill in this form carefully, printing neatly. Be sure to sign your name.

Completed copies can be mailed to BV Exhibition Box 2281 Smithers BC V0J 2N0

Make Cheques Payable to **Bulkley Valley Exhibition**

**For Exhibit drop off times refer to Hall Rules and/or Important Dates in the Prize Book - Classes vary**

Division	Class	Description	Entry Fee	
				<b>Office Use</b>
				Tags Issued by _____
				Paid: CASH
				Or CHQ
				CHQ# _____
				INV# _____
				REC # _____
				<b>Attach additional forms if needed</b>
		<b>Subtotal Entry Fees</b>		
		GST 5%		
		<b>Sub Total Fees</b>		
<b>BVX Admission Pass</b>				
Exhibitor pass / Must have 5 hall entries to qualify / Select one appropriate exhibitor pass / Birthdate must be entered above for child or youth pass		Cost/Fee	Sub total	
		Child (6 -12) \$ 6.00		
		Youth (13- 16) \$10.00		
		Adult \$15.00		
		<b>Sub Total Passes</b>		
<b>One Cheque for this amount; no postdated cheques accepted</b>			<b>Total Fees &amp; Passes</b>	
Make cheques Payable to: <b>Bulkley Valley Exhibition</b>				BN# 118820919

I hereby certify that all exhibits entered above have been produced by me during the past 12 months, or have not been previously exhibited at the Bulkley Valley Exhibition.

I further certify that any cereals or forage crops entered by me have been produced on my farm on an area not less than one acre.

Signed: \_\_\_\_\_ Date: \_\_\_\_\_

